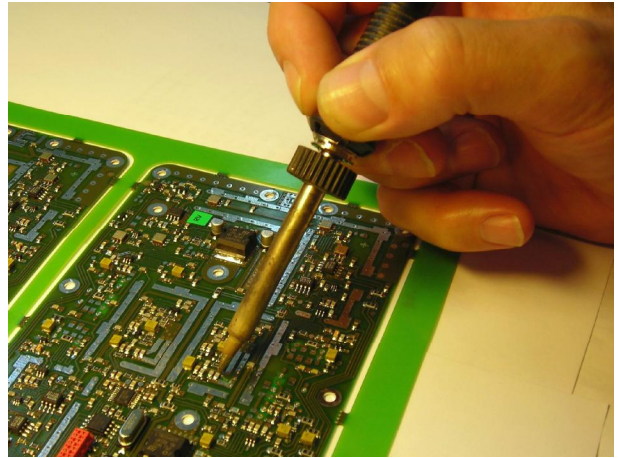


## Flexible approach to the needs of customers

---

In the hand assembly department the hand-soldering of SMD and THT components is performed and necessary additional works are carried out. Production goes through the spot check or 100% visual inspection. Newest equipment and skilled staff guarantee the high quality works. All hand assembly operators are certified IPC specialists (IPC-A-610D).

Our manufacturing working places meet the ESD protection requirements. In working areas and storehouse operators wear ESD-save garments and footwear.



### Possible assembly operations include:

- through-hole mounting
- SMT components mounting
- supplementary components mounting after automatic assembly line
- mounting and demounting of through-hole and SMT integral circuits and other complex components
- installation of non-standard components
- manual soldering paste coating and components placing with subsequent soldering in oven
- post-assembly hand cleaning if needed
- ready PCB varnishing

### Equipment and materials:

- soldering and repair stations from world famous manufacturers
- wide range of fluxes
- lead and lead-free soldering alloys
- different cleaning solvents
- stereoscopic visual inspection
- antistatic packing materials
- air-bubble packaging
- thermal printers for labels manufacturing